

N.E. 1/4, OF SECTION 18, T.6N., R.1W., S.L.B. & M.

NOTE: P. 95 OMITTED

IN OGDEN CITY

SCALE 1" = 200'

TAXING UNIT: 25, 359

SEE BOOK 11 PAGE 25

S89°22'5"E 2642.69'

SEE P. 94

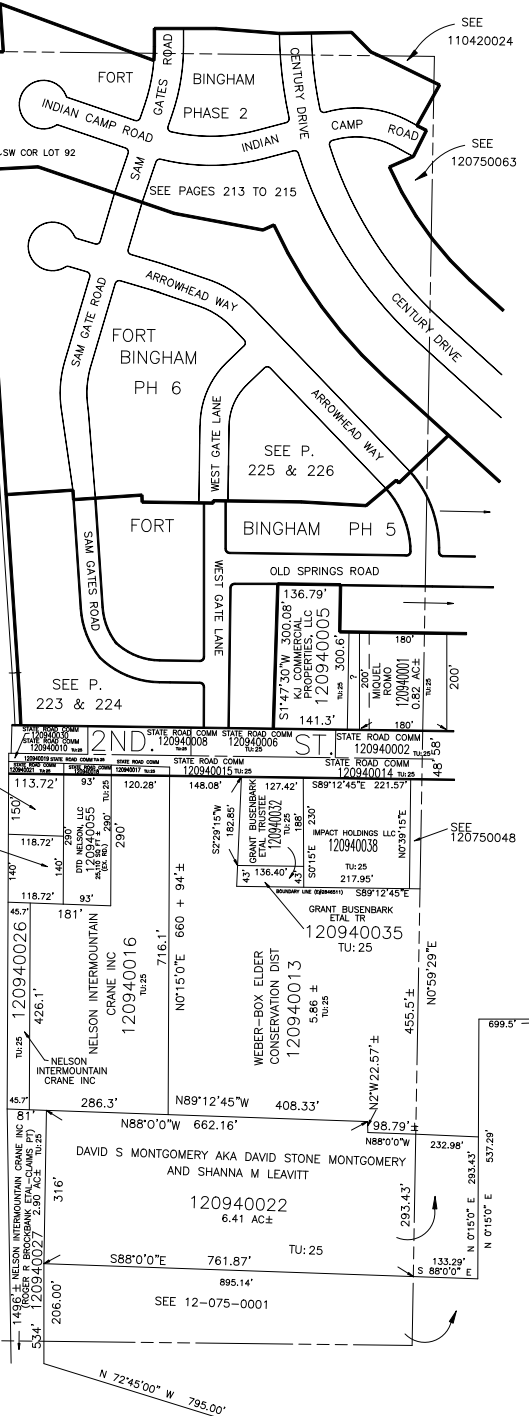
OGDEN CITY CORP
(120940058)
13,782 SQ FT
TU:25

DDO ECONOMIC DEV. PROJECT AREA
N35°11'15"W DEED-4067.37'

JZ ENTERPRISES
LLC
(120940020)
12822 SQ.FT.
TU:25

JZ ENTERPRISES LLC
(120940037)
16,621 SQ FTA TU:25

O.S.L.R.CO. 120940028



N0°56'48"E 2655.85'

S89°21'0"E 2642.05'

SEE PAGE 96

N 72°45'00" W 795.00'